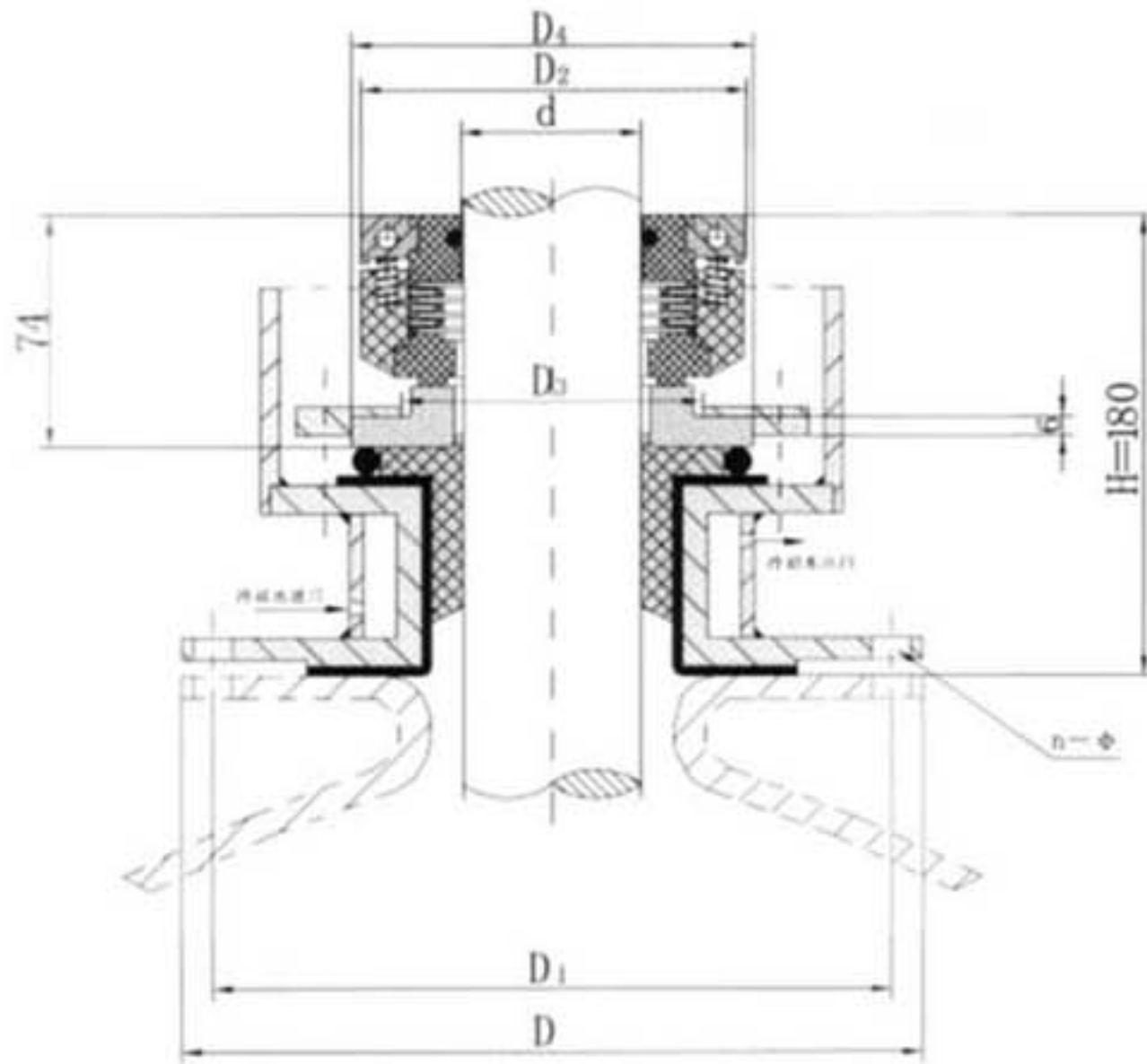


# SW HG212型(Type)



## 特点

- ▲ 该系列密封为外装、单端面、多弹簧、平衡型，采用聚四氟乙烯波纹管结构。

## Specialty

- ▲ Mounted exterior, Single Face Multiple Spring and Balanced, TFE-Bellows Structure.

## 适用范围

- ▶ 密封腔压力:  $P = -0.1 \sim 0.5 \text{ MPa}$
- ▶ 密封腔温度:  $t = -10^\circ\text{C} \sim 120^\circ\text{C}$
- ▶ 转速:  $n \leq 500 \text{ r/min}$
- ▶ 介质: 硫酸、硝酸、盐酸、有机酸等各种强腐蚀性介质

## Apply Range

- ▶ **Annular Seal Pressure** :  $P = -0.1 \sim 0.5 \text{ MPa}$
- ▶ **Annular Seal Temperature** :  $t = -10^\circ\text{C} \sim 120^\circ\text{C}$
- ▶ **Rotation speed** :  $n \leq 500 \text{ r/min}$
- ▶ **Medium**: All various stronger corrosive medium, such as, Vitriol, Nitric acid, Hydrochloric acid and Organic acid.

## 装配尺寸

Mounting dimension

(HG2098-91)

规格 (Specification)	尺寸 (Size)	d	D	D <sub>1</sub>	D <sub>2</sub>	D <sub>3</sub>	D <sub>4</sub>	n-φ
212-40	40	160	130	87	72	87	4-18	
212-50	50	190	150	98	80	100	4-18	
212-60	60	210	170	110	90	105	4-18	
212-65	65	210	170	115	95	115	4-18	
212-70	70	240	200	120	100	115	8-18	
212-75	75	240	200	130	110	130	8-18	
212-80	80	240	200	130	110	130	8-18	
212-90	90	265	225	140	120	140	8-18	
212-95	95	265	225	145	125	150	8-18	
212-100	100	280	250	150	130	150	8-18	
212-110	110	320	280	162	140	165	8-18	
212-120	120	320	280	172	150	175	8-18	
212-130	130	375	335	182	162	177	12-18	
212-140	140	375	335	192	170	195	12-18	
212-150	150	375	335	202	180	205	12-18	

(79标)

规格 (Specification)	尺寸 (Size)	d	D	D <sub>1</sub>	D <sub>2</sub>	D <sub>3</sub>	D <sub>4</sub>	n-φ
212-40	40	160	130	90	72	88	4-φ14	
212-50	50	185	150	100	80	101	4-φ18	
212-65	65	205	170	115	95	116		
212-80	80	235	200	130	110	131		
212-95	95	235	200	150	125	151	8-φ18	
212-102	102	290	255	150	130	156		



(69标)

规格 (Specification)	尺寸 (Size)	d	D	D <sub>1</sub>	D <sub>2</sub>	D <sub>3</sub>	D <sub>4</sub>	n-φ
212-42	42	170	140	90	72	80	6-φ15	
212-50	50	200	170	100	80	101	8-φ15	
212-60	60	220	190	110	90	111	10-φ15	
212-70	70	280	250	120	100	121		
212-76	76	280	250	130	110	131		
212-80	80	280	250	130	110	131	16-φ15	
212-89	89	280	250	140	120	141		
212-95	95	330	300	150	125	151	20-φ15	

# SWHG204型 (Type)

## 特点

- ▲ 该系列密封为外装、单端面、多弹簧、平衡型结构。

## Specialty

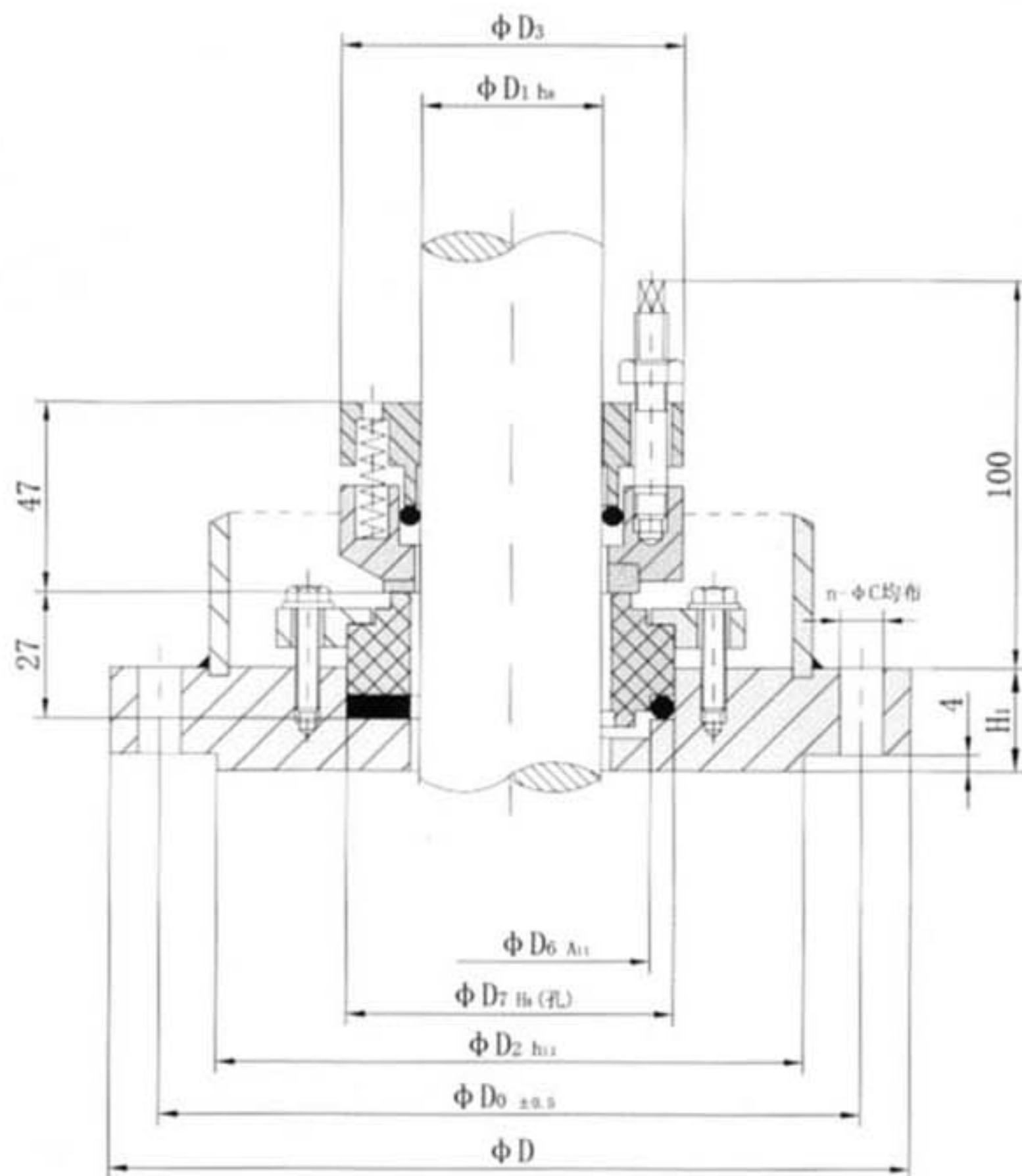
- ▲ Mounted exterior, Single Face, Multiple Spring and Balanced.

## 适用范围

- ▶ 密封腔压力:  $P = -0.1 \sim 0.6 \text{ MPa}$
- ▶ 密封腔温度:  $t = -20^\circ\text{C} \sim 200^\circ\text{C}$
- ▶ 转速:  $n \leq 500 \text{ r/min}$
- ▶ 介质: 酸、碱、油、高分子悬浮介质

## Apply Range

- ▶ **Annular Seal Pressure:**  $P = -0.1 \sim 0.6 \text{ MPa}$
- ▶ **Annular Seal Temperature:**  $t = -20^\circ\text{C} \sim 200^\circ\text{C}$
- ▶ **Velocity:**  $n \leq 500 \text{ r/min}$
- ▶ **Medium:** Acid, Alkali, Oil and Macromolecule suspend medium.

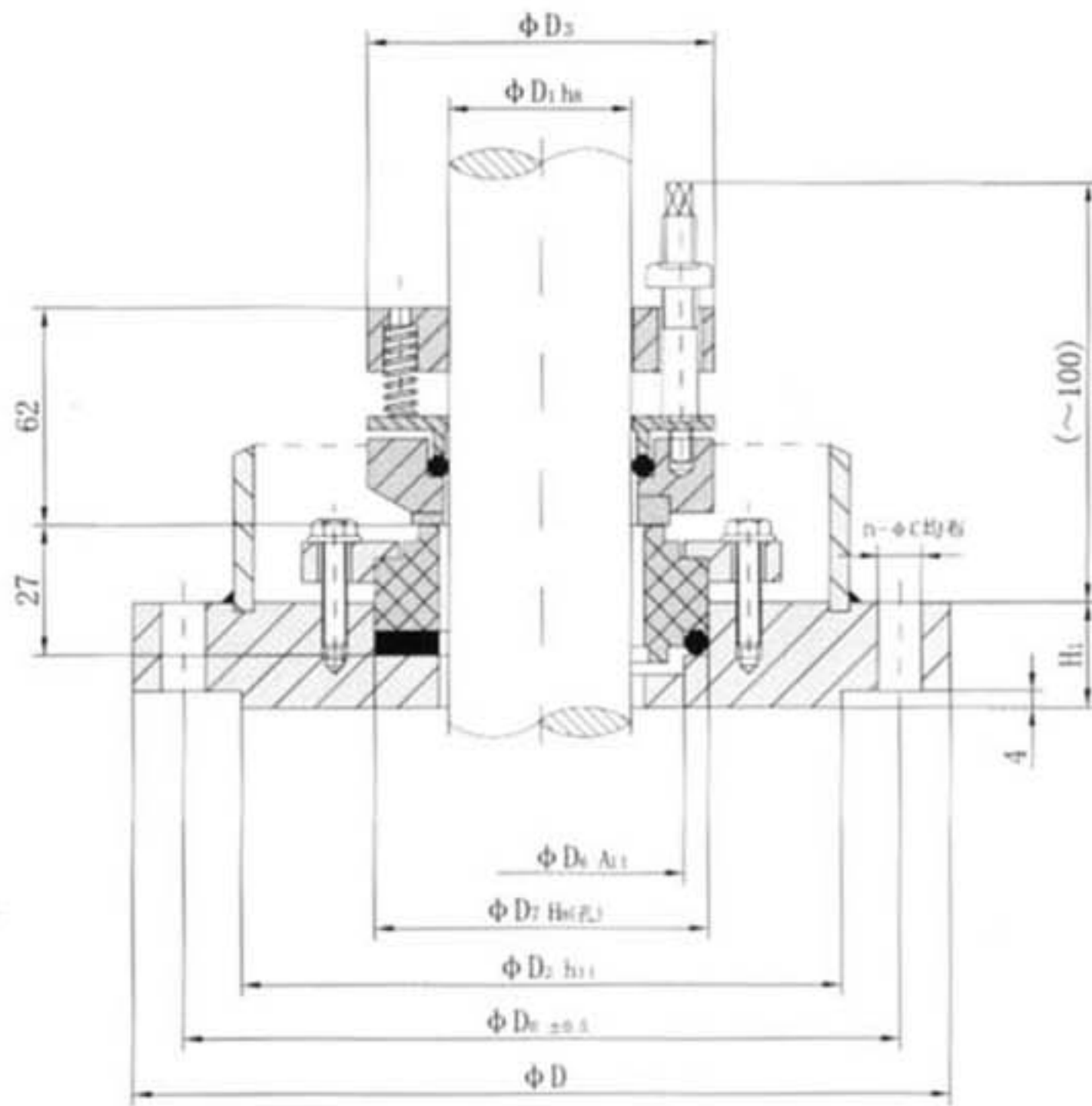


## 装配尺寸 (与釜口连接尺寸符合HG5-754-78)

Mounting dimension (The dimension of joined agitator orifice is according to the standard of HG5-754-78)

规格 (Specification)	尺寸 (Size)	$D_1$	$D$	$D_0$	$D_2$	$D_3$	$D_6$	$D_7$	$H_1$	$n - \phi C$
HG202-30		30	185	150	116	66	51	60	20	
HG202-40		40	225	170	135	76	61	70	20	4- $\phi 18$
HG202-50		50	235	200	164	88	71	80	22	
HG202-65		65	235	200	164	103	86	97	22	8- $\phi 18$
HG202-80		80	260	225	188	118	102	112	22	
HG202-95		95	290	255	220	135	117	127	24	12- $\phi 18$
HG202-110		110	315	280	245	150	132	142	24	

# SW HG202型(Type)



## 适用范围

- ▶ 密封腔压力:  $P = -0.1 \sim 0.25 \text{ MPa}$
- ▶ 密封腔温度:  $t = -20^\circ\text{C} \sim 200^\circ\text{C}$
- ▶ 转速:  $n \leq 500 \text{ r/min}$
- ▶ 介质: 酸、碱、油、高分子悬浮介质

## Apply Range

- ▶ **Annular Seal Pressure:**  $P = -0.1 \sim 0.25 \text{ MPa}$
- ▶ **Annular Seal Temperature:**  $t = -20^\circ\text{C} \sim 200^\circ\text{C}$
- ▶ **Rotation Speed:**  $n \leq 500 \text{ r/min}$
- ▶ **Medium:** Acid, Alkali, Oil and Macromolecule suspend medium.

## 特点

- ▶ 该系列密封为外装、单端面、多弹簧、非平衡型结构。

## Specialty

- ▶ Mounted exterior, Single Face, Multiple Spring and Unbalanced.

## 装配尺寸(与釜口连接尺寸符合HG5-754-78)

Mounting dimension(The dimension of joined agitator orifice is according to the standard of HG5-754-78)

规格 (Specification)	尺寸 (Size)	$D_1$	$D$	$D_0$	$D_2$	$D_3$	$D_6$	$D_7$	$H_1$	$n-\phi C$
HG204-30	30	185	150	116	66	51	60	20	4- $\phi 18$	
HG204-40	40	225	170	135	76	61	70	20	4- $\phi 18$	
HG204-50	50	235	200	164	88	71	80	22	8- $\phi 18$	
HG204-65	65	235	200	164	103	86	97	22	8- $\phi 18$	
HG204-80	80	260	225	188	118	102	112	22	8- $\phi 18$	
HG204-95	95	290	255	220	135	117	127	24	12- $\phi 18$	
HG204-110	110	315	280	245	150	132	142	24	12- $\phi 18$	

